



STL-MK-30M (Desktop) Fiber Laser Marking Machine

Product Pictures



Specifications

Model:	STL-MK-30M(Desktop)	Laser source brand:	Max
Laser Type:	Fiber Laser	Wavelength:	1064 nm
Power (W):	30W	CNC or Not:	No
Control software:	JCZ -EZCAD	Cooling Mode:	Air cooling
Graphic Format supported:	JPG, BMP, DXF, PLT	Laser beam quality M2:	1.2-1.8
Marking Depth:	0-1mm	Power consumption	≤500w
Marking Area:	110*110mm	Max Position Speed	7000mm/s
Maximum Pulse Energy:	0.8mj	Repetition Accuracy:	0.005 mm
Certification:	CE, FDA, EAC, SGS	Machine Warranty:	1 years
Package Size:	90*83*105cm(0.78CBM)	Gross Weight:	100Kg

Other Model Machine





Safeway Technologies Ltd.

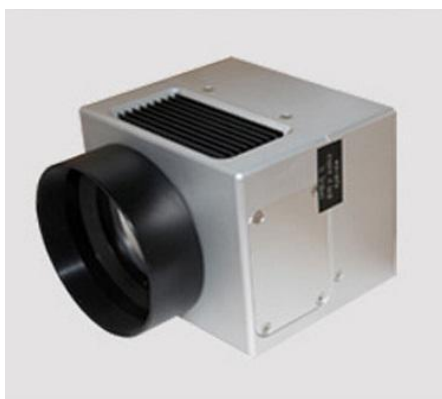
Technology for moving forward...

The main configuration of the machine



MAX Laser Source

1. with 1 years warranty
2. Each piece has test report and has a sole serial No,Service life is up to 100,000 hours and maintenance-free during period
3. Can be suitable for the marking work of metal,plastic and leather



Newest Galvanometer scanner head

1. It comes with red light, which makes it easier for you to find the focus.
2. It has an alarm system that will signal you in time when the machine fails.
3. It also has the advantages of fast marking speed and high marking accuracy.



EZCAD control card

1. Each piece has a sole serial No, to check to avoid fake
 2. It can install the drive to connect the rotating shaft.
- Genuine EZCAD control system compatible with win7/8/10 xp



F-theta-lens

1. The spot quality of the scene is very good, which can greatly improve your marking effect, Our machine brings you a F-theta-lens for free



Safeway Technologies Ltd.

Technology for moving forward...

Marking Sample



1. It is recommended to choose 20w, 30w, 50W laser marking machine for ordinary metal, gold and silver jewelry marking.
2. For deep metal engraving (0--1mm), it is recommended to choose a laser marking machine with a power of 50w or higher.

Thank You!
Safeway Technologies Ltd.