



Safeway Technologies Ltd.

Technology for moving forward...

Catalogue

**STLJBZ-OC09 High Speed Automatic
Paper Cup Machine**



Safeway Technologies Ltd.

Technology for moving forward...

STL-JBZ-OC09 High Speed Automatic Paper Cup Machine (70 to 80 Pcs Each Min)



Head Office: House# 02, Road# 2/3, Banani, Dhaka-1213, Bangladesh.

Hotline: 01730793660, 01822132851, info@safewaytech.com, www.safewaytech.com



The Pictures of half set mould and Full set mould



Full Set Mould

Half Set Mould

Half Set Mould: Different Size Cups **with same bottom size and angle**, Just different size in cup height and Top Dia. Clients can change half set mould to produce different size of cups (**Easy Change Mould**).

Full set mould: Different Size Cups **with different bottom size or angle**, even different size for cup height and Top Dia. Clients should change Full set mould to produce different size of cups(**Very difficult to change mould**).

We suggest that new start clients **Just for change half set mould** , as changing the half set mould will be easier. And one machine is better goes with 1-2 extra half set mould

Technical Specification:

Model	STLJBZ-OC09 High Speed Automatic Paper Cup Machine
Cup Side Welding:	Copper heater
Paper Cup Size	1.5 ~9OZ (30ml~250ml Mould exchangeable) Max Cup height to 90 MM, Max Cup Bottom Diameter 60MM
Raw Material	Only one-side PE coated paper (Popular for Hot drink cups)
Suitable Paper	140gsm—230 GSM
Speed	70 - 80 pcs/min
Total Power	4.8-5.5KW
Power Source	50/60HZ, 380V/220V (Better use 380V, 3 Phase) or special Power requirement.
N.W	1350Kg
Gross Weight	1450Kg
Machine Size(L * W * H)	2000*900*1600mm (20 GP Container load 6 sets, 40HQ Container load 12 sets)
Package Size(L * W * H)	2100*1000*1700mm
Working Air Source:	No need provide Air
Cup Bottom Heating:	Heater Knurling
Cup Bottom Knurling:	Heater Knurling (if use single PE coated paper)
Packing	Seaworthy Wooden Case

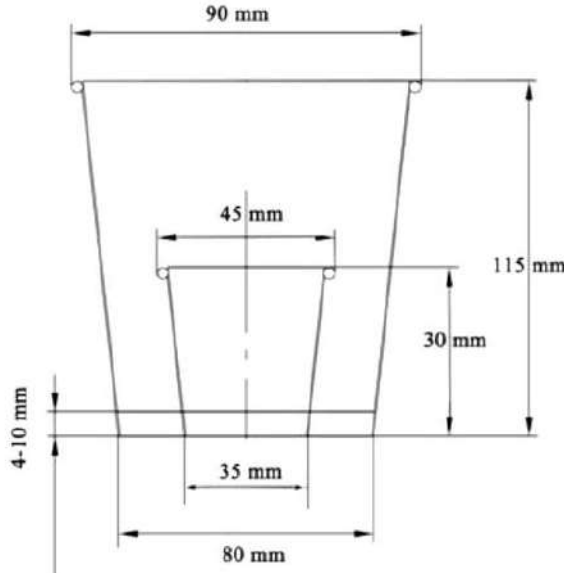


Safeway Technologies Ltd.

Technology for moving forward...

Cup Size Range

Cup Size Range (JBZ-OC9 paper cup machine progress cup size limit):



Cup Bottom diameter:
Min 35mm ~ Max 80mm;

Cup Top Diameter:
Min 45mm ~ Max 90mm;

Cup Height:
Min 30mm ~ Max 115mm;

Bottom Knurling Depth:
Min 4mm ~ Max 10mm (popular 5mm)

Top Curling Rim Diameter:
Popular about $\Phi 2.5 \sim \Phi 3$

Paper Cup Sample:





Main Technical Improve

1. Adopt Open Cam for the dividing moving, compare with gear box, easy maintenance, stable and reliable, easy replace broken parts.



open cam system instead of gear box



gear box has very small cam ,that is easy broken after machine running long time



Gear Box design only **Small Cam and small bearing** running in small Box it will limit up machine running speed (keep in lower speed 40 to 50 pcs/min), If machine running speed more than 60 pcs /min it will short span life and easy broken.



Safeway Technologies Ltd.

Technology for moving forward...

2. New design use internally geared motor which provide machine running more powerful and Long years span life.

New design



Normal design



New design : low noise, longer service life

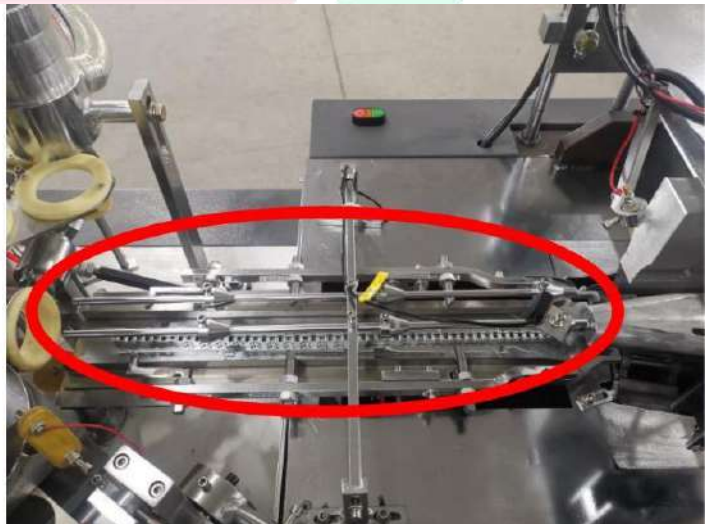
Normal design : The reducer and motor which are connected by the belt function are separated. The belt is easily broken for long time running several months.

3 .Cup body is transferred through aluminum rod which makes the cup body feeding more smoothly and without cup body turning over or jamming troubles.

New design



Normal design



cup body feeding more smoothly

Cup body transferring have tipping and jamming troubles



Safeway Technologies Ltd.

Technology for moving forward...

4. New separate curling unit design can increase the running speed of the machine, which is high efficient. In normal design the curling unit is fixed on the iron board and it moves with the board, which is lower efficient

New Design

Normal design



5. the main shaft of the turn plate is fixed by the iron plate which keep the machine running at high speed more stably (no shaking and less cup dropping off troubles)

New Design

Normal design

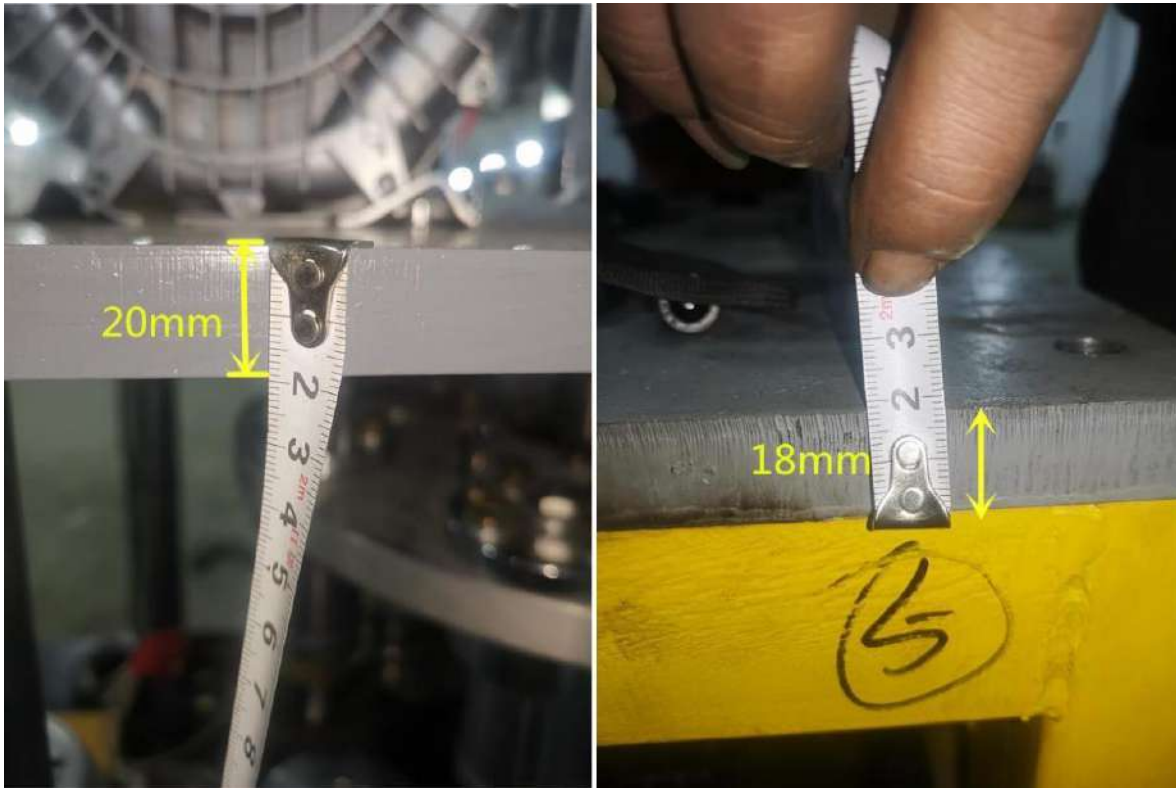




Safeway Technologies Ltd.

Technology for moving forward...

6. Use the 18 mm thickness iron board and 20 mm thickness top board , which make machine much heavy, Machine is running high speed very stable no shake.



7. In new design , adding these spare parts in machine to reduce the noise when machine running , low noise .

New design

Normal design





Safeway Technologies Ltd.

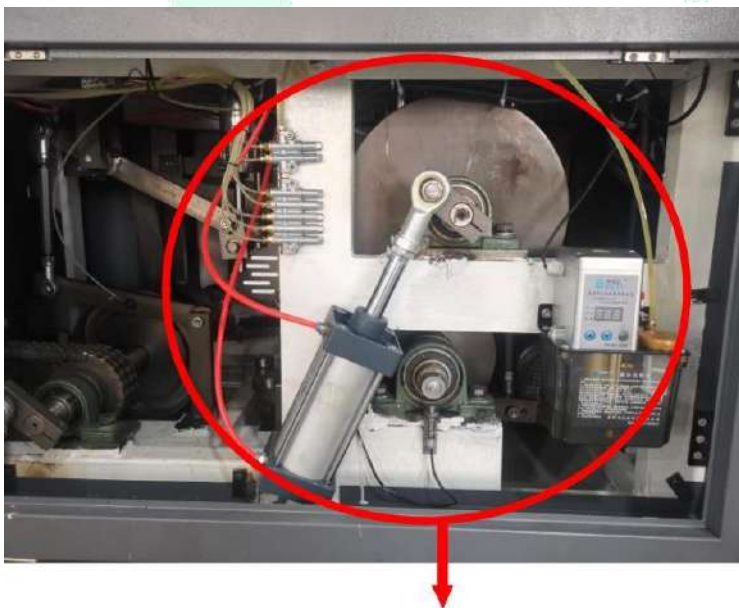
Technology for moving forward...

8. New design of bottom base of machine and high border design, which can to prevent oil leakage and make the machine heavier , more stable .

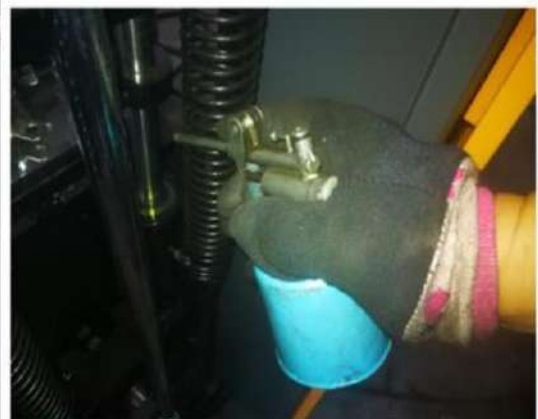


9. Open Cam Cup Machine with Auto Oil Lubrication system for machine self oil lubrication which keep sure machine smooth running and long span life.

New design



Normal Design Manual Oil Spray Gun



with more pipe connect to machine key running parts.



Safeway Technologies Ltd.

Technology for moving forward...

10. The new design robot hand can pick the cups more accurately and it is more suitable for high-speed running. The new design of pushing the cup body directly to the mold makes the machine run faster.

New design single plate



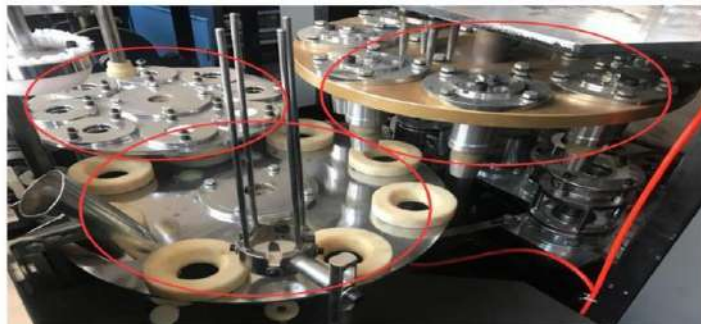
New design robot hand



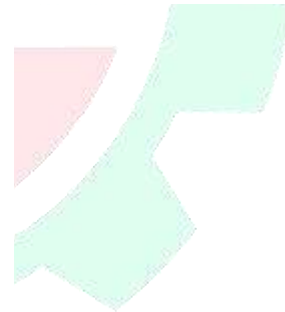
New Bottom paper direct punching design



Normal design three turntable



Normal design robot hand

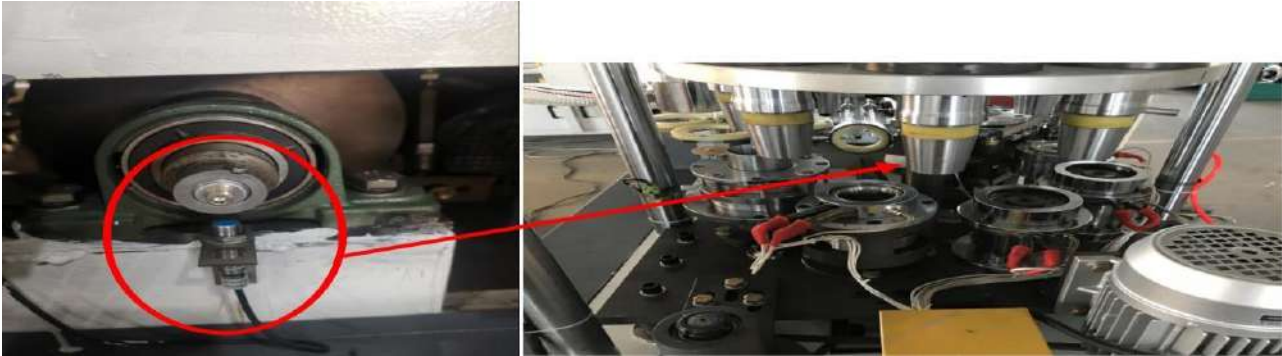




Safeway Technologies Ltd.

Technology for moving forward...

11. The machine is installed with the location sensor which ensures that mould will stop in the middle of the heaters (not stop above of heater which be heating broken mould).



12. Air pipe for blowing away the waste paper.



13. Bottom paper feeding is locked by pic showed part, which makes the bottom paper feeding more smoothly and less troubles.





14. Full Automatic Silicone oil lubrication system direct for paper fan.

New design



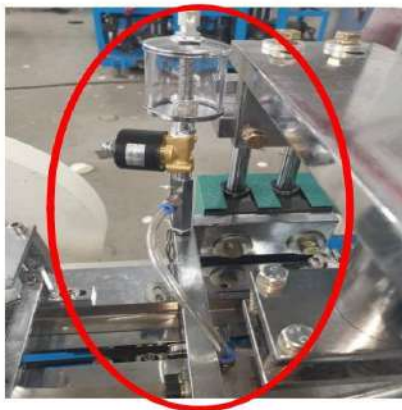
solenoid valve

automatic silicone oil lubrication system

Normal design

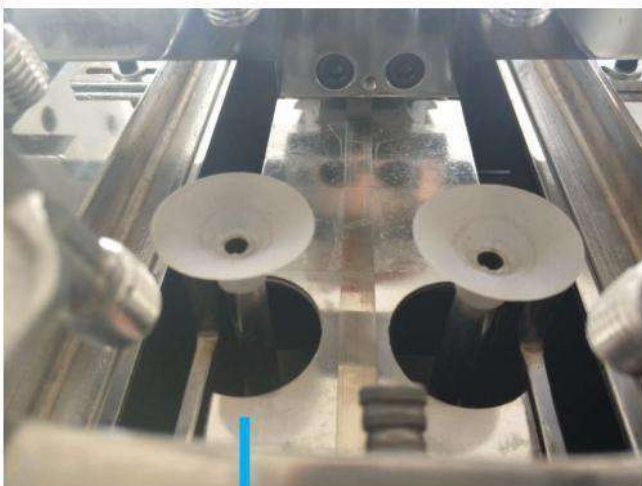


Normal design silicone oil lubrication system is simple .



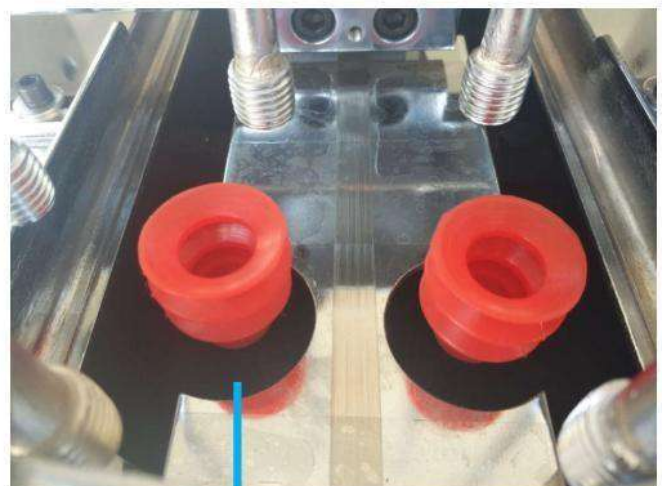
15. In new design we use three layers sucker which can be used for long time.

Normal design



Single layer sucker is easily broken

New design



Three layers sucker : if the first layer is broken , it can be cut off and use the second layer .



16. Our design Paper Fan sealing mould with Tope Flat type.

Normal design side sealing mould



The round mould is good for forming big size cup (over 150ml) .If the cup size is small , paper fans **are easily blocked.**

New design side sealing mould



Newly designed shape of mould is good for forming both big and small cups. Paper fans **go smoothly and will not blocked .**

17. Using the Alarm light which is for reminding clients. If the machine is in trouble, client can find machine in trouble and remove it in time, which is good for machine maintenance.





Case for Solution of Client Questions

1. Case One for How to Remove finished Cup shrink Trouble:



Finished cup have wrinkled problem



Adjust this claw part



**Step 1 :Loose the screw for adjust the claw
(push up a little to make finish cup not
wrinkled problem)**

Step 2: Tighten the screw after the adjustment at last .

2. Case Two For How to Remove finished Cup Top Curling broken Trouble:



**Some of finished Cups
Top Curling be broken**



Safeway Technologies Ltd.

Technology for moving forward...

That is Trouble happen pls do not adjust machine as trouble by Paper not by Machine, Pls Try to with wet Fabric to Cover the Paper fan Or Paper Fan with Silicone Oil do lubrication: Pls see below video link on Youtube for Wet Fabric how to cover paper fan:

Sample:



Thank You!
Safeway Technologies Ltd.

Head Office: House# 02, Road# 2/3, Banani, Dhaka-1213, Bangladesh.
Hotline: 01730793660, 01822132851, info@safewaytech.com, www.safewaytech.com